



An Enterprise Funded, Customer Driven Tool Solution

Launchpad User Guide

Contents

- Overview 5
 - Vision Statement..... 5
 - History..... 5
 - Who can use Launchpad..... 5
 - Quick Facts..... 5
 - Current Launchpad Offering 5
- Roadmap 6
 - FY 23 Plans 6
 - How to request tools in Launchpad..... 7
 - How to transfer your enterprise licenses to Launchpad 7
 - How to fund specific tool requests..... 7
 - Potential cost of using Jira/Confluence Usage 7
- Using Launchpad..... 8
 - How to request a Launchpad account..... 8
 - How to access Launchpad..... 8
 - How to move data into Launchpad 8
 - How to request help 8
- Cameo 8
 - Training 8
 - Opening Cameo 9
 - Choosing which Cameo license to use..... 9
 - How to Log into TWC from Cameo 10
 - How to Open a local Project 10
 - How to open a TWC Server Project 10
 - Option 1: 10
 - Option 2 10
 - How to Save a Project Locally:..... 10
 - Option 1: 10
 - Option 2: 10
 - Locking and Unlocking Projects in TWC..... 10
- DOORS..... 12
- TeamWork Cloud 12

How to Log into TWC from Cameo	12
How to open a TWC Server Project from Cameo	13
Option 1 (example only, yours may look different):	14
Option 2 (example only, yours may look different)	15
How to Save a file to TWC Server Project.....	17
Option 1:	17
Option 2. team.....	17
How to change your TeamWork Cloud Password	17
Frequent Q & A	19

Overview

Vision Statement

Increase the speed of adoption of Digital Materiel Management methods needed to accelerate the digital transformation by lowering the barrier of entry by providing access to critical tools

History

Launchpad developed based on direction of Gen. Richard to support AFMC FY 23 Strategy of Digital Materiel Management. Launchpad is developed as a partnership between the DTO and AFLCMC/HNII. The DTO is leading the strategic development of Launchpad based off the Gen. Richardsons direction. AFLCMC/HNI is responsible for Digital Platform as a Service (DPaaS) development. Launchpad is a DPaaS environment.

Launchpad was originally set up as a temporary environment for programs to use while they wait for their own custom DPaaS environment to be stood up- to LAUNCH them into their own environment. After talking with a number of potential customers, the team realized that most of the smaller organizations would not be able to afford the long-term cost of their own DPaaS environment and there needed to be a free environment for users to access Digital tools in a collaborative environment. Launchpad became a 'Stay' Pad.

Launchpad was developed and open for a limited number of users in January of 2023. The plan was to start small and grow slowly during 2023 to work through any issues before the public launch in October 2023.

Who can use Launchpad

Launchpad is open to DAF employees and their contractors who have a CAC. We currently are not allowing any large OEM contractors (or anyone that will claim IP rights) in the Launchpad environment due to IP concerns. We are working to develop a solution, but we are not there yet.

Quick Facts

- No cost, enterprise solution for access to critical tools
- IL-5, CAC required for access, VPC in a multi-tenant environment
- Hosted on CloudOne via PlatformOne inside of DPaaS C1SERC
- Currently over 300+ users- 104 three letter organizations represented across 72 project spaces
- Onboard windows occur every 3 weeks*

Current Launchpad Offering

- 329 total users (50 users still waiting for access)
- Model Based Systems Engineering Tools Available
 - Cameo System Modeler
 - Cameo Enterprise Architect
 - DataHub Plugin

- TeamworkCloud Enterprise Edition
- Cameo Collaborator for TWXC
- Requirements Management Tool Available
 - IBM DOORS
- Capacity: 500 users

Roadmap

FY 23 Plans

By the end of FY 23 we plan to:

- Increase Launchpad capacity to 1,000 users
- Stand up an IL-6 instance of Launchpad
- Hours of operation will be 24/7.
- Develop a pilot Launchpad instance in Azure cloud

FY 23 funding will be used to start the implementation of the following tools. It may take up to 6 months for users to actually see and be able to use the tools (est. roll out of tools will be January 2024)

- Creo CAD (needs assessment)
- DOORS Next Gen (needs assessment)
- Jira – Delayed, roll out TBD
- Confluence – Delayed, roll out TBD
- BitBucket
- Assurant Cyber Attack
- Visual Studio Code
- Solidworks
- Mathworks
- Sparx
- Ansys AGI



Mathworks

Aerospace Toolbox
 Communications Toolbox
 Control System Toolbox
 Curve Fitting Toolbox
 Deep Learning Toolbox
 Financial Toolbox
 Image Processing Toolbox
 Mapping Toolbox
 Optimization Toolbox
 Requirements Toolbox
 RF Toolbox
 Satellite Communications Toolbox
 Signal Processing Toolbox
 Simulink Control Design
 Simulink
 Statistics and Machine Learning Toolbox
 System Identification Toolbox
 UAV Toolbox

Sparx

Sparx Enterprise Architect, Ultimate Edition, Floating, Part #EAULTFLOAT

Sparx Pro Cloud Server Enterprise Premium (Includes Web EA), System Part #SSPCSES

Sparx EA Prolaborate (User license) Integration w/ Jira * & Confluence Part #PL1

Ansys

Systems Toolkit Enterprise Standard, V12.5 (Perpetual)

ModelCenter Premium North America, Standard, V2022 R2 (Perpetual)

Model Center MBSE ConnectoMagicDraw, Standard, (Perpetual)

Systems Toolkit Enterprise Standard, v12.5 (TECS)

Model Center Premium North America, Standard, V2022 R2 (Perpetual)

Model Center MBSE ConnectoMagicDraw, Standard, (Perpetual)

How to request tools in Launchpad

Users can submit requests for new tools to the Launchpad team at any time via email to the Launchpad team at aflcmc.hnii.launchpad@us.af.mil

How to transfer your enterprise licenses to Launchpad

Launchpad will maintain any enterprise licenses you want to transfer over

- All license renewals/ support will be covered by Launchpad funds

How to fund specific tool requests

Launchpad Self-Funded Customization

- You can fund the Assessment, ATO and licenses for any tool you want to see in Launchpad
- Any licenses purchased will be shared by the entire Launchpad Community

Potential cost of using Jira/Confluence Usage

The Launchpad team realizes that there will be a large demand to use Jira/Confluence across large teams within the DAF. We are unable to estimate the demand for the tool at this time, so once Jira is available for use, we may have to charge-Letter organization a one time fee of \$110/user per year to get access to Jira. This will give the launchpad team time to get Enterprise funding to sustain the usage rate long term.

Using Launchpad

How to request a Launchpad account

In order to obtain access to the DPaaS LaunchPad

1. You must have a PlatformOne Account. You will need to request a PlatformOne account. Your PlatformOne account must be connected to your CAC and less than 20 characters.
 - a. You can create a PlatformOne account at <https://sso-info.il2.dso.mil/>.
2. Once you have your PlatformOne account you can register for a LaunchPad account at: <https://forms.osi.apps.mil/r/b2JvEdUcyD>

We ask the primary POC for each organization creates a LaunchPad account first to establish a project space. A project is a space for you and your team to collaborate on models and data. We suggest having one project per team.

Once the project name has been created, the primary POC will share the project name with their desired team members. The project list on the sharepoint form will be updated every two weeks with all project names, but users can always list the project name in the other option.

How to access Launchpad

You can access launchpad from any web browser at: <https://c1sercde.cce.af.mil>.

You do not have to be connected to VPN/on NIPR. The only requirement is that you have a CAC reader in your computer.

You will be able to log in using your CAC card.

How to move data into Launchpad

The only way to move data in and out of Launchpad is to use DoD Safe.

[DoD SAFE & Launchpad Tutorial](#)

This is not our long term solution, the team is working to find a better way to move data.

How to request help

Users can submit requests for help to the Launchpad team at any time via email to the launchpad email inbox: aflcmc.hnii.launchpad@us.af.mil

Cameo

Training

Opening Cameo

1. Open Cameo from the desktop Application
2. Server name: ls
3. Port: 1101 (default)
4. Click Okay
5. Cameo 2021x will load

You must be logged into TWC inside of Cameo if you want to collaborate with others on your model.

Choosing which Cameo license to use

Here is the breakout of the plug-ins that are included with each of the Cameo licenses, to help you better choose which Cameo license to use.

Cameo System Modeler plug-ins :

Edition / What's included	Architect Edition	Enterprise Edition
MagicDraw Architect	X	X
Cameo Simulation Toolkit		X
SysML Plugin	X	X
Cameo Data Modeler		
Code Engineering		

Cameo Enterprise Architecture Plugins:

Edition / What's included	Enterprise Edition
MagicDraw Standard	
MagicDraw Architect	
MagicDraw Enterprise	X
UAF plugin	X
UPDM 2 Plugin	X

*List continued next page

SysML Plugin	X
Cameo Business Modeler Plugin	X
Cameo Data Modeler Plugin	X
TOGAF Plugin	X
Zachman Plugin	X

How to Log into TWC from Cameo (Important if you want to collaborate with others on the model)

If you want to Collaborate or save in Teamwork cloud you must:

1. Go to the Collaborate tab
2. Select Login from the drop down
 - a. You will enter your username and password. Your username should be firstname.lastname.SB and the password that was sent to you in a separate email
 - b. Server name: teamwork.c1sercde.cce.af.mil

How to Open a local Project

1. File
2. Open Project
 - a. This will open all locally saved projects. You cannot collaborate with others on the local projects

How to open a TWC Server Project

This will allow you to open existing models and collaborate with your team

Option 1:

1. File-
2. Save Project
3. Select the TWC folder

Option 2.

1. Collaborate
2. Save projects to server

How to Save a Project Locally:

Option 1:

1. Collaborate
2. Save changes Locally/Make available offline

Option 2:

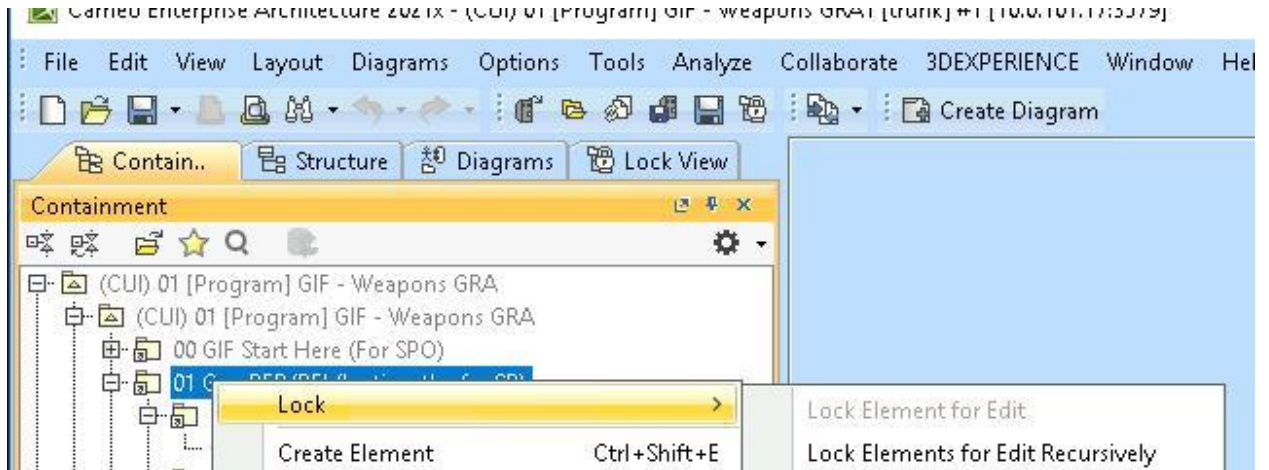
1. File
2. Save (saves to local environment)

Locking and Unlocking Projects in TWC

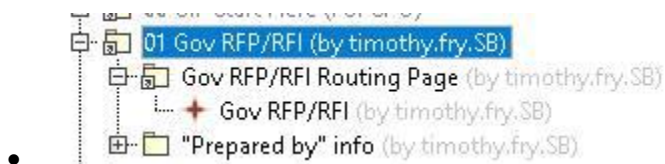
To lock:

- Select a model package or element and right click.
- Select **Lock**

- Select **Lock Elements for Edit Recursively**

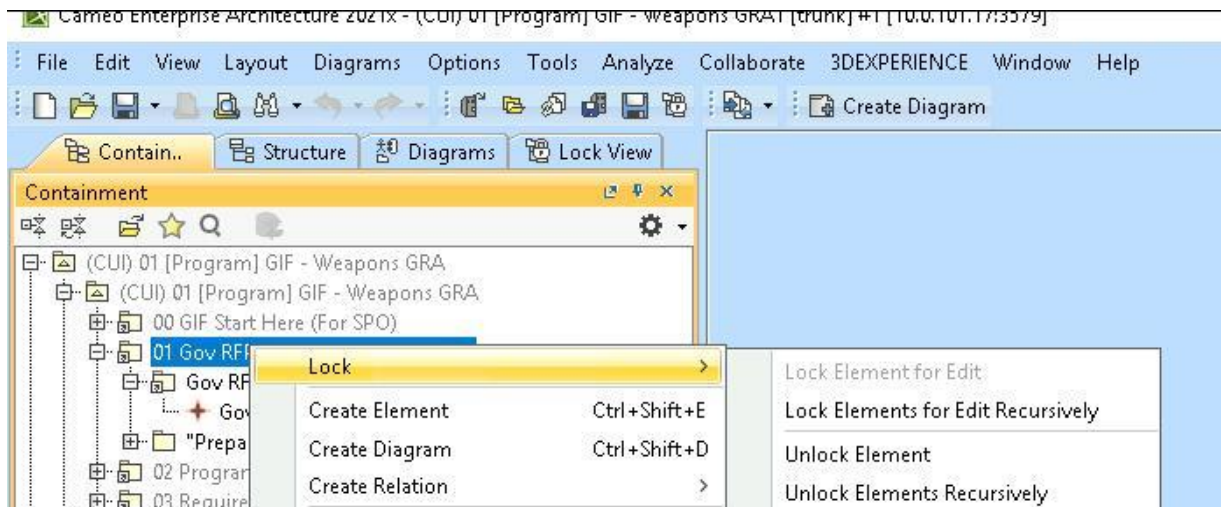


- Notice that when I do that, it shows the elements locked **by timothy.fry.SB**.



To unlock:

- Reverse the process by selecting **Unlock Elements Recursively**



- and now it shows the elements are not locked



DOORS

TeamWork Cloud

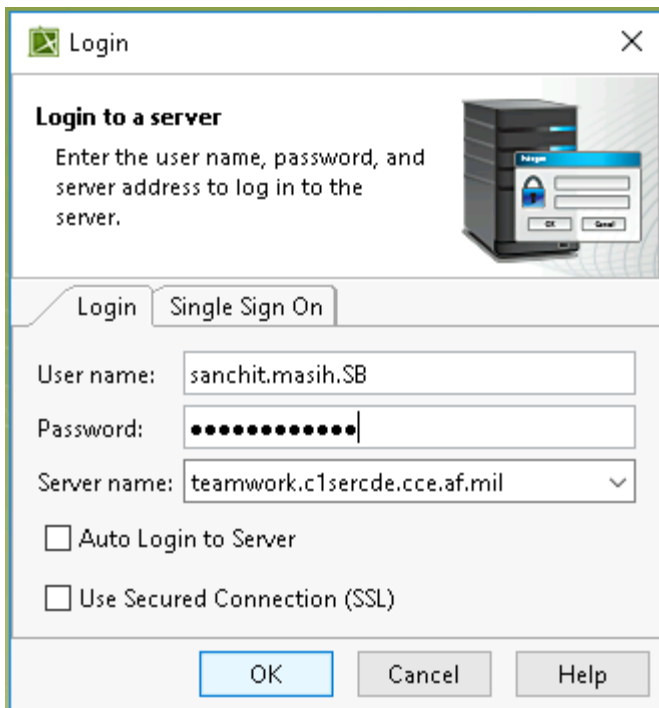
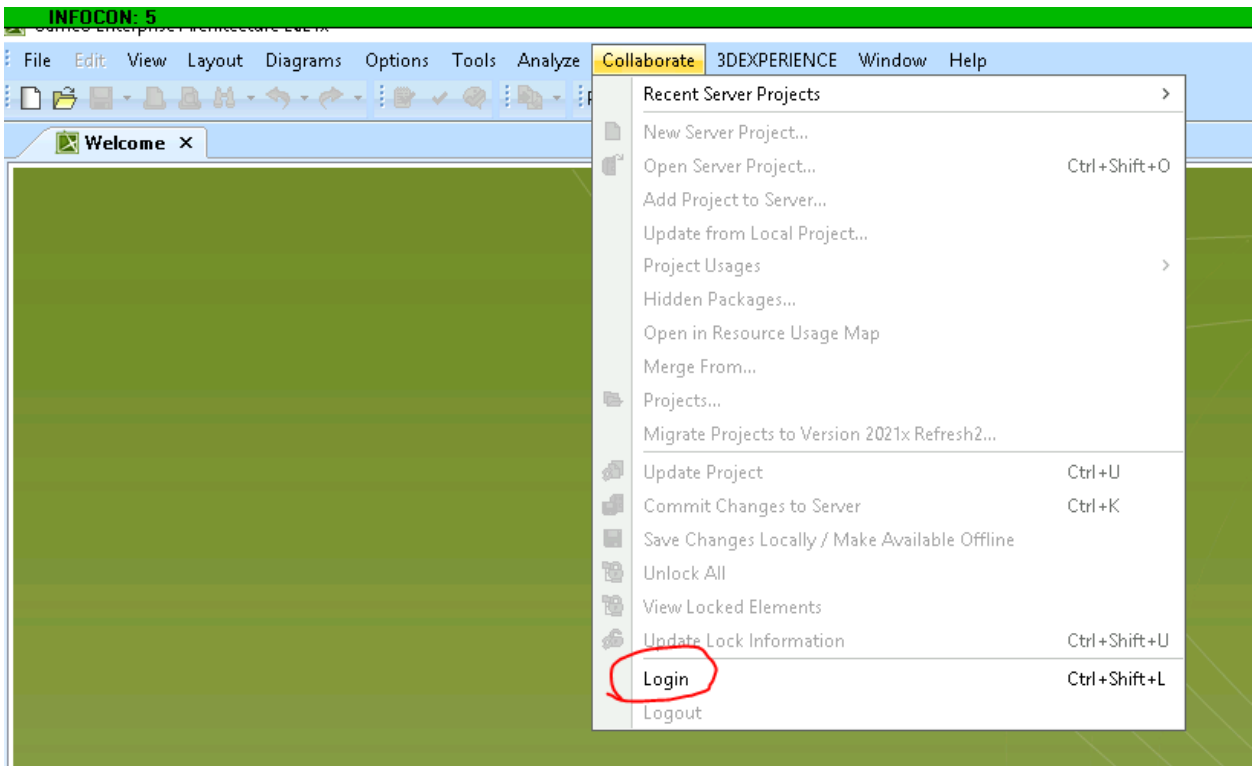
Training:

<https://avolve.apps.dso.mil/#/display/edb93df0-e1f9-4ec9-84d4-a01ee2d39858>

How to Log into TWC from Cameo (Important if you want to collaborate with others on the model)

If you want to Collaborate or save in Teamwork cloud you must:

1. Go to the Collaborate tab
2. Select Login from the drop down
 - b. You will enter your username and password. Your username should be firstname.lastname.SB and the password that was sent to you in a separate email



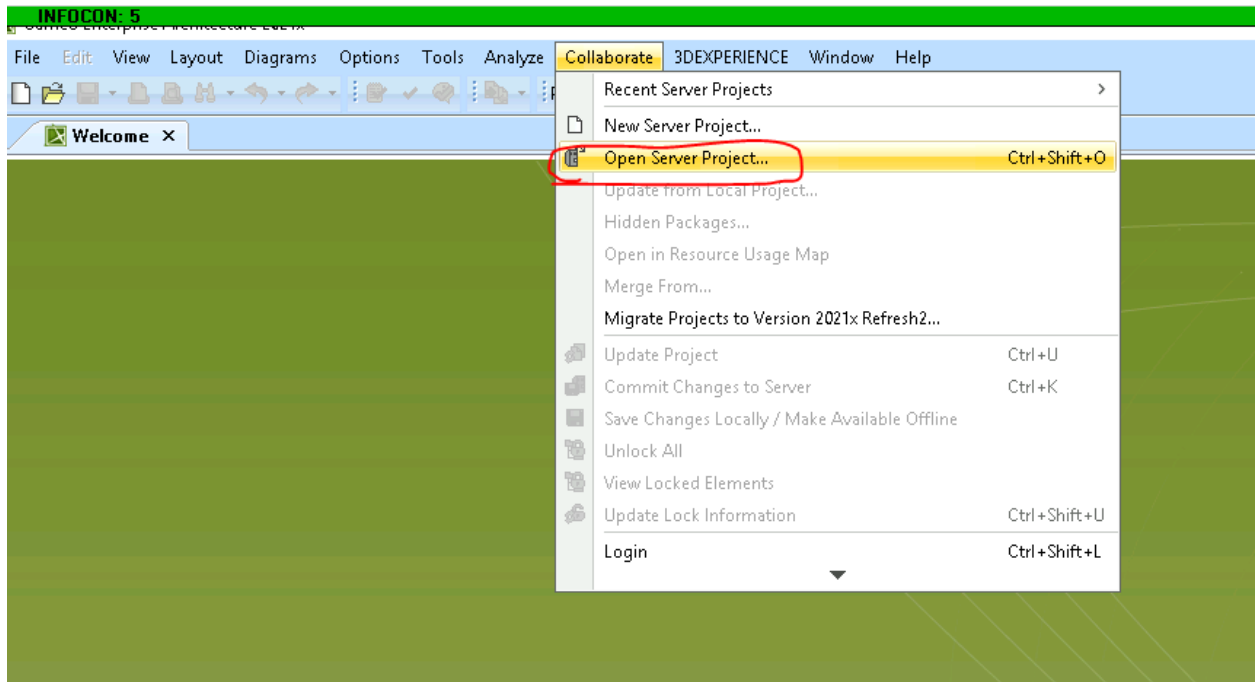
L3

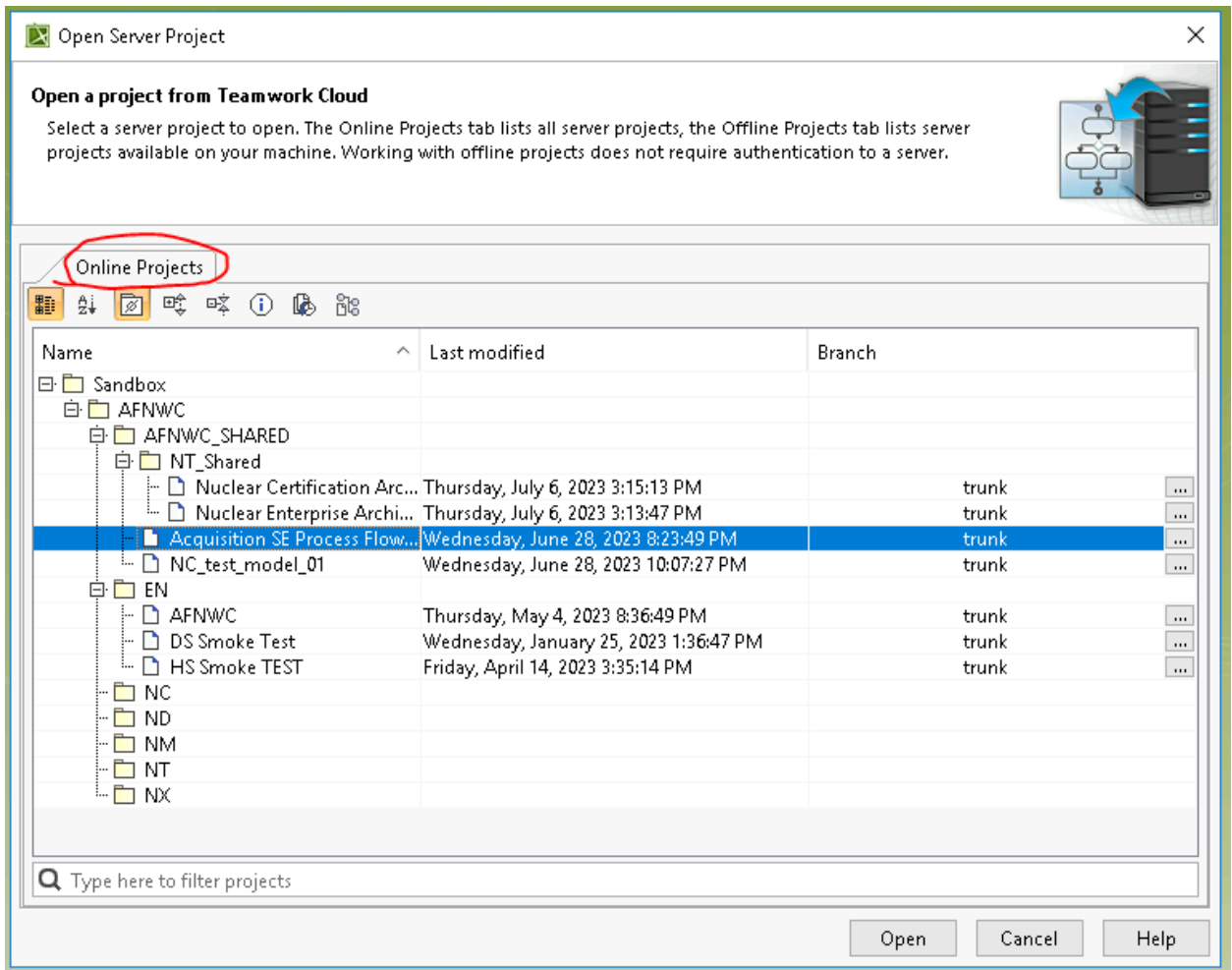
How to open a TWC Server Project from Cameo

This will allow you to open existing models and collaborate with your team

Option 1 (example only, yours may look different):

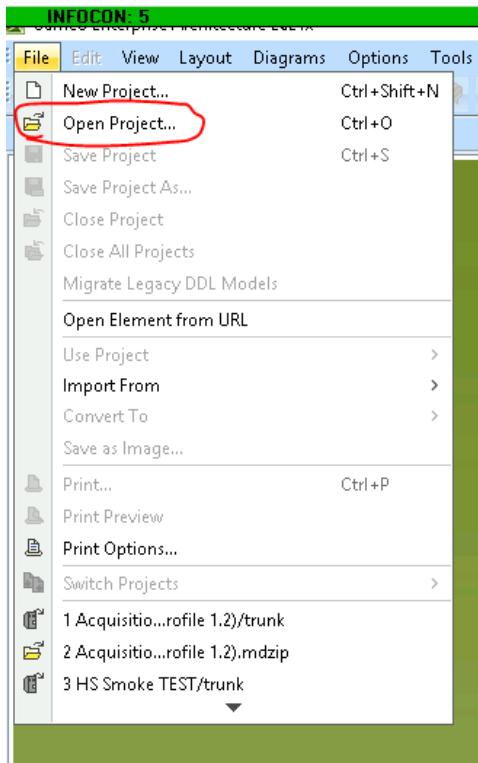
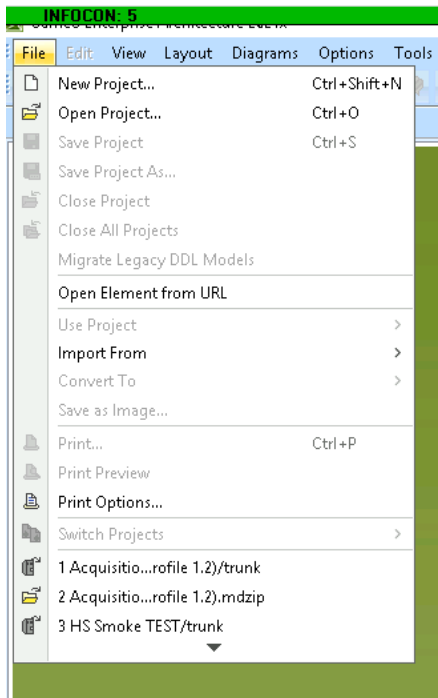
1. Collaborate
2. Open Server Project
3. Select the appropriate folder
4. Select the model you want to open and click “Open”

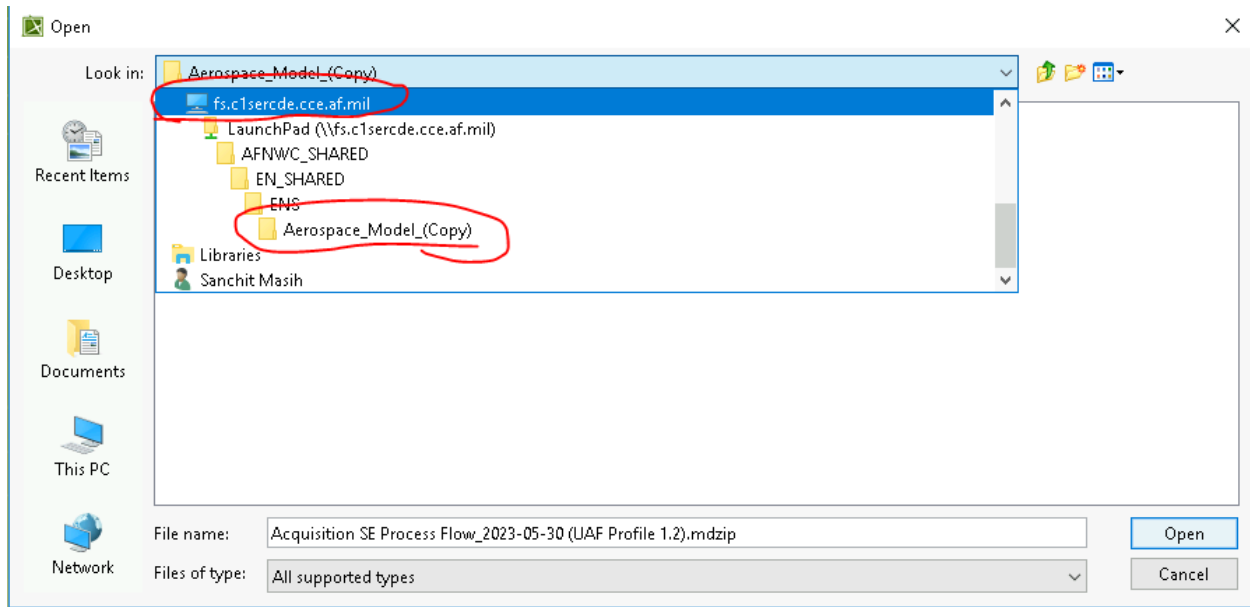




Option 2 (example only, yours may look different)

1. File
2. Open Project
3. Select TWC Folder





How to Save a file to TWC Server Project

Option 1:

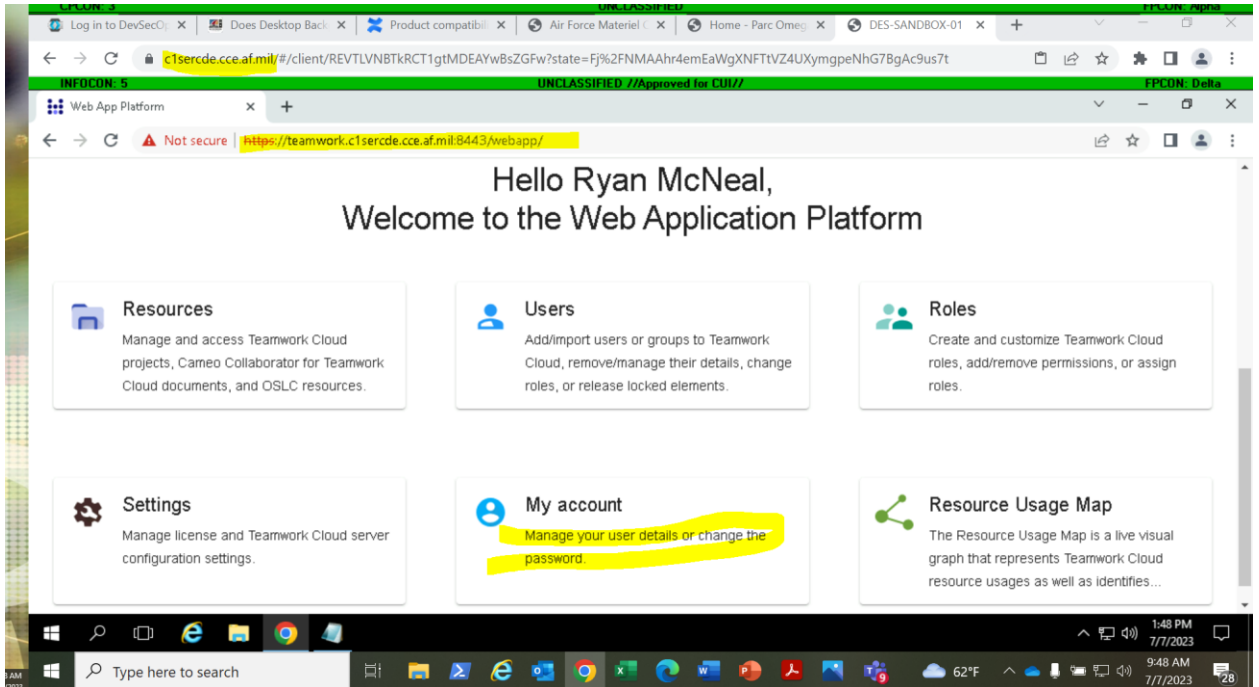
1. File
2. Save Project
3. Select the TWC folder

Option 2. team

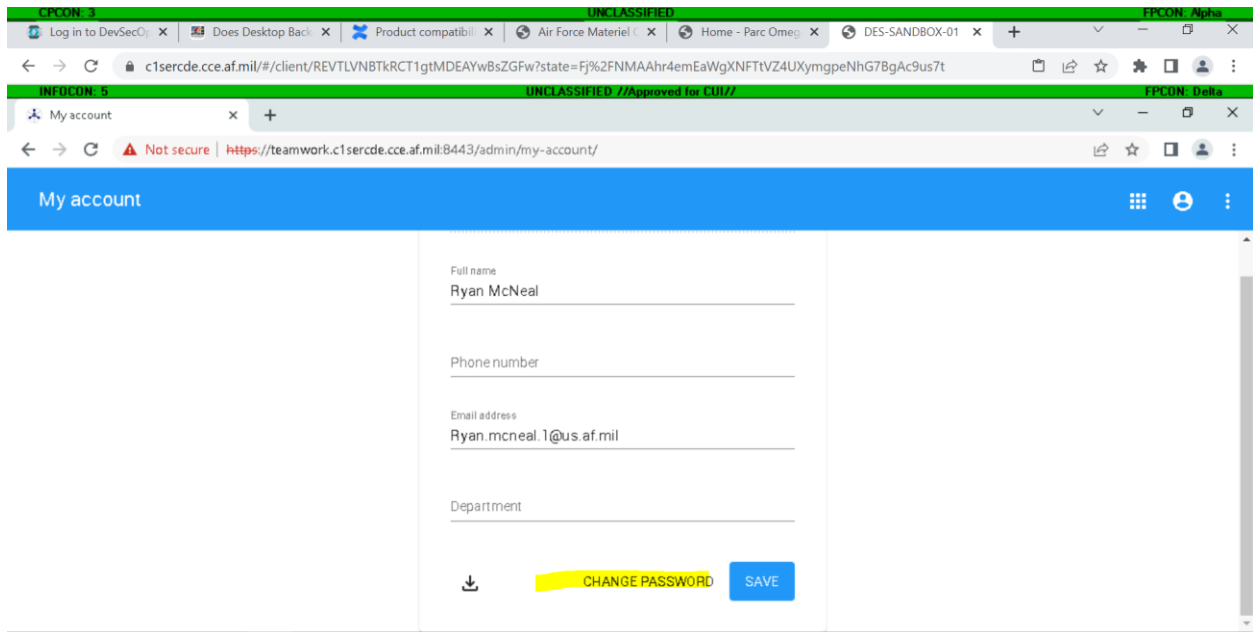
1. Collaborate
2. Save projects to your organizations file server

How to change your TeamWork Cloud Password

1. Login to TWC by opening up chrome inside the LaunchPad environment:
<https://teamwork.c1sercde.cce.af.mil:8443/webapp/>
2. then go to My Account



3. Select Change Password



Getting Started with the TeamWork Cloud Swagger API Interface

Did you know that TeamWork Cloud has an API? You can read all about it [hgere](#) however, be sure to select the documentation for the correct version of TeamWork Cloud within LaunchPad (

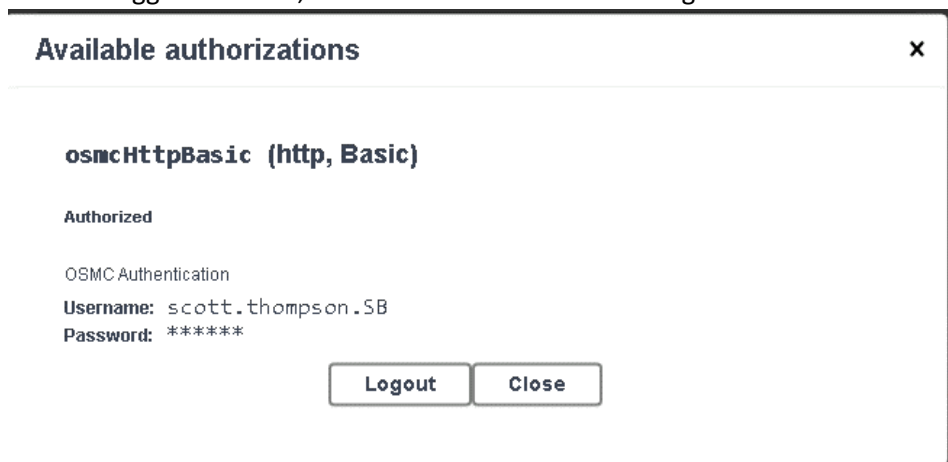
However, if you want to get started right away learning how to integrate with your models inside TeamWork Cloud, then inside LaunchPad, simply navigate to <https://teamwork.c1sercde.cce.af.mil:8111/osmc/swagger/>

At this location, you can sign in using the Authorize button using your regular TWC credentials, and use the many options to explore the API and even execute some of the API commands. The interface will also provide example **curl** commands on how you could programmatically execute these commands within your own program. Below is just a quick example of what you can use the API for, however there are many other users you can learn about on the No Magic documentation, including how to execute simulations directly from your stored model.

The following example requires the users to be an Admin within TeamWork Cloud.

Pulling Groups and Users from

1. In the Swagger interface, click the Authorize button to login.

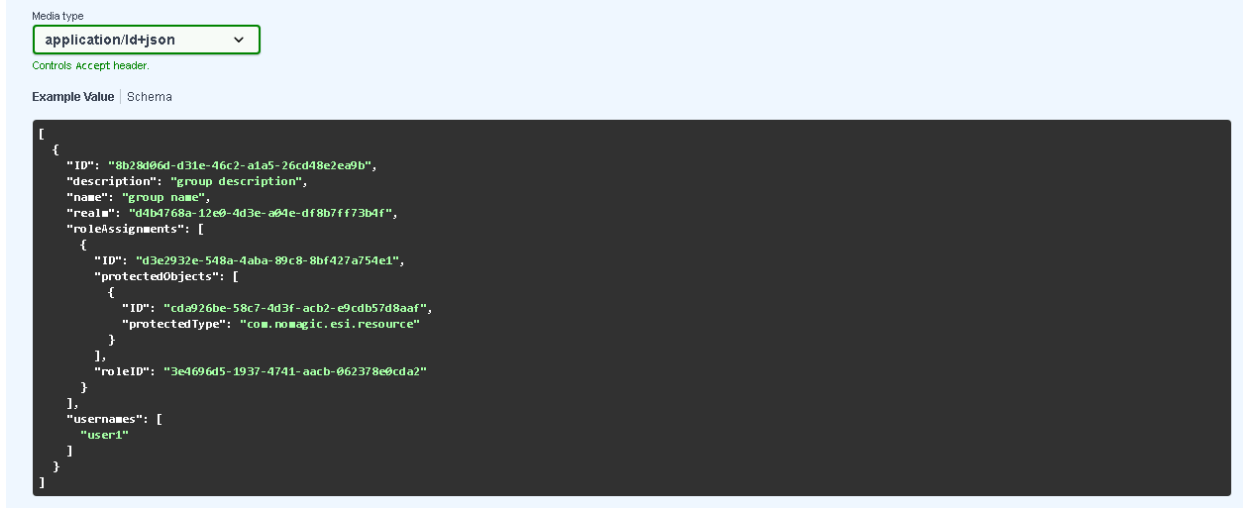


2. Scroll down to the command labeled GET /osmc/admin/usergroups List all user groups.



3. Click "Try it Out", then set includeBody to "true"
4. Click "Execute"

The response will include all the groups, with their associated members, in JSON format. In addition, a second response will be provided that shows the 'schema' of the response, which you can use for programming an application to receive the data.



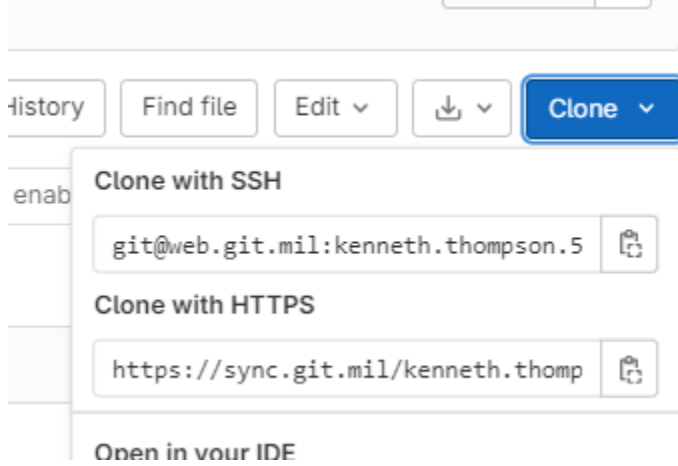
Using web.git.mil from within LaunchPad

This feature is still a BETA release, so report issues you find back to the LaunchPad Helpdesk. These steps are up to date, as of January 2024.

ANY questions or issues should be sent to the LaunchPad Helpdesk: AFLCMC/HNII Launchpad <AFLCMC.HNII.Launchpad@us.af.mil>

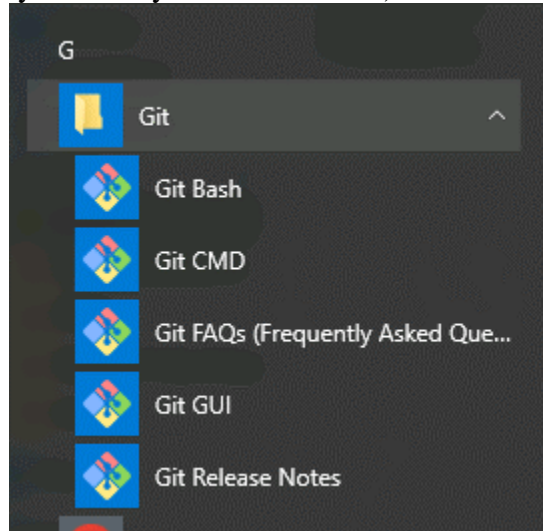
Steps to access web.git.mil from within LaunchPad

1. Already have access at web.git.mil (just go there are create an account) and a repo created within git.mil that you want to work with within LP
2. You must use a "Personal Access token" (PAT) from within web.git.mil to access from LaunchPad. OAuth/CAC authentication does not work. (Reminder: When you create the PAT, be sure to copy it somewhere, because you cannot retrieve it again from the site)
 - a. You can either use a general PAT or a repo specific PAT, but for security, you 'should' narrow the scope of your PAT to just what it needs (e.g. Repo level, read/write, etc)
 - b. Information you'll need to login from LaunchPad:
 - i. Repository Clone URL: Access the repo and get the clone url

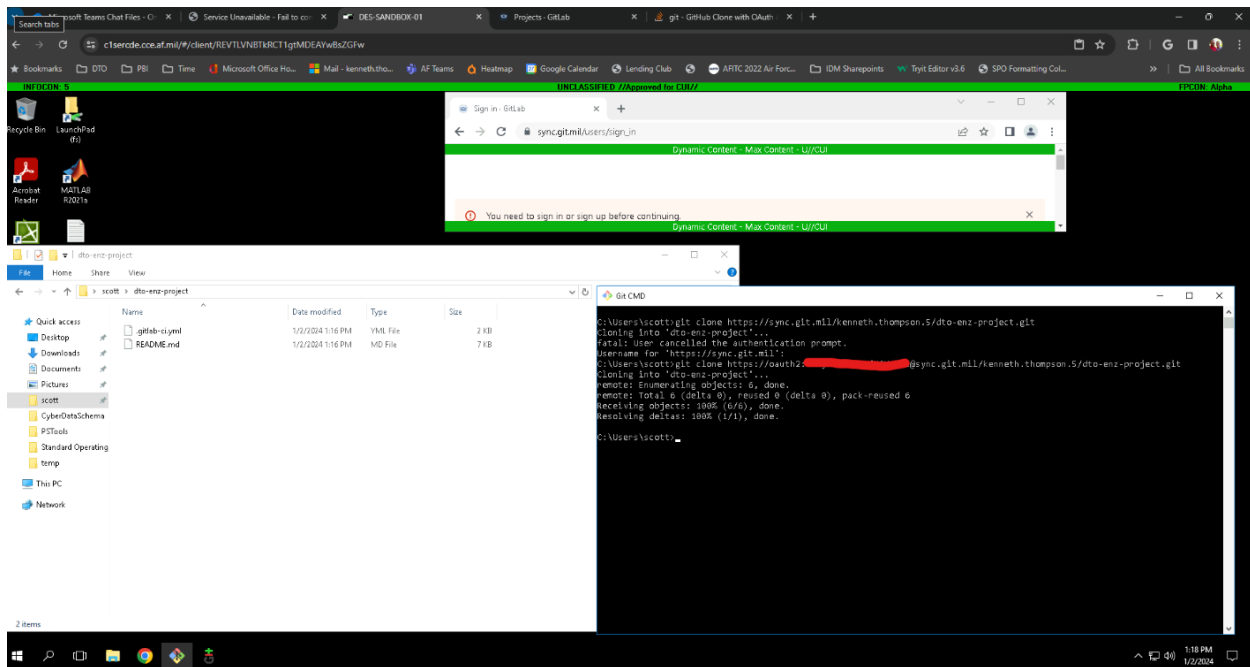


- ii. Your Personal Access Token

- Once you have the PAT and repo, go to LaunchPad, and use Git BASH or GIT CMD (accessible within the Start menu) to open a terminal window (If you're already familiar with Git, the rest of this you already know how to do)



- Use the repo url and your PAT to create your login url in the following format:
 - `https://oauth2:<PAT>@<Clone URL>`
 - Within the Git terminal, navigate to the folder where you want your repo to be cloned to, then type: `git clone https://oauth2:<PAT>@<Clone URL>` to copy the repo to that location. This will also connect the location to your repo within Git.
- At this point, you can work with the files at the local storage and use Git commands (or Git GUI) to commit the changes back to web.git.mil. If you need help doing this, please reference Git User Guides.



ANY questions or issues should be sent to the LaunchPad Helpdesk: AFLCMC/HNII Launchpad <AFLCMC.HNII.Launchpad@us.af.mil>

Frequent Q & A

How do I add TWC to be a trusted site?

The certificate error comes from the certificate being a self-signed cert. Though, you can add the site <https://teamwork.c1sercde.cce.af.mil> to the Trusted Sites in Internet Explorer you will get the message "We're sorry, your browser is not supported".

- Zooming can be accomplished by pressing CTRL+ALT+SHIFT to change virtual keyboard, mouse and zoom settings.

What is the platform's ability to scale, accommodate a larger user base, and the sustainability of funding models as user numbers increase? What about licensing fees, the potential for fractional ownership of licenses, and the overall cost per user?

LaunchPad is fully funded across the FYDP. Hon Hunter was directed to find the funding to support the DTO access to tools. AQX has selected a handful of programs to fund LaunchPad for the masses. We are allowed those handful of programs to steer the direction LaunchPad goes. The cost per user is something we are tracking for cost savings as we contract for tools and services as an enterprise.

passWhat is the focus on governance for controlling configurations and preventing software suites from becoming unmanageable, signaling the importance of governance and control in the platform?

We are actively working the plan for managing software versions. We are not sure what that looks like but we will always trail the latest version by some time due to the need to manage risk through the cyber process. We are striving to be as up to date as we can. We will also strive to develop a plan for software versioning that will allow folks time to move from one version to another if that is required.

What is the platform's ability to push data from different security domains, emphasizing the need for cross-domain solutions?

We have CDS's built into the requirements for FY25 and beyond. These solutions are not only infrastructure but also data. They take time to develop and implement and will be rolled out incrementally, both in classification level and data types. LaunchPad is partnering with the higher classification level solutions so when they become available across the enterprise, LaunchPad will support data transport as needed by the users. As of right now LaunchPad is only slated to deliver an II-5 and II-6 solution. We are partnering with other teams to work higher classification levels.

What are the storage requirements per user, as well as data sources and access methods for data integration?

We do not have a limit for data storage. However, we are striving to NOT be a Authoritative Source of Truth. We want to leverage other environments like AF-PLM and the DAF BIG 6 in order to leverage data from the source that is postured to store them. When LaunchPad needs to be a data source, we will determine governance at that time.

Will planned tools will be hosted within the environment or externally, and if browser-based tools can be accessed within the environment or externally?

Hosting Web-based tools is a use case being considered LaunchPad 2.0.

What is the training plan for the tools inside of LaunchPad?

The DTO is working on developing tools and badges for the tools currently hosted in LaunchPad with various partners across the DAF.